

Óvíð

for
Wind Quintet

by
Gunnar Karel Másson

Score is transposed

2010 - 2011

Flute
Oboe
Clarinet in Bb
Horn in F
Bassoon

Performance notes;

Flute ;

× = Keylicks


◇ = Fingered, non voiced; quasi glissando
harmonics
multiphonics

Oboe ;

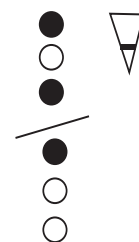
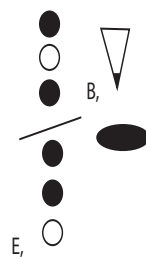
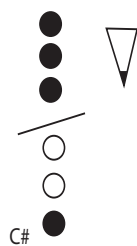
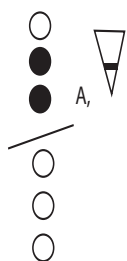
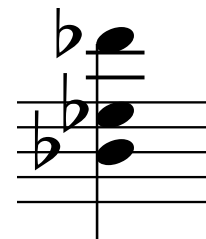
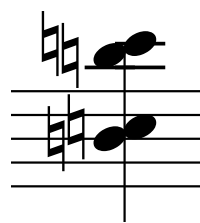
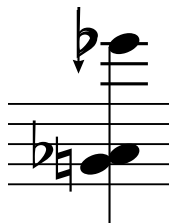
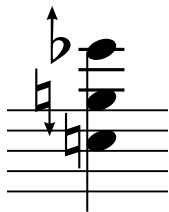
× = Keylicks

◇ = Fingered, non voiced; harmonics

▼ = Air only, fingerings are only to show the
shortening or lengthening of the tube

Flz  = Flutter tongue

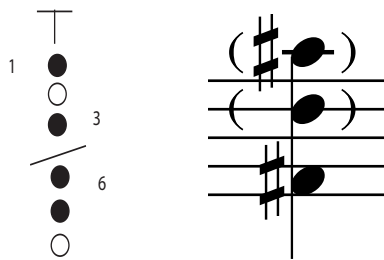
Oboe multiphonics fingerings ; (in order of appearance)



Clarinet in Bb ;

X	==	Keylicks
◇	==	Fingered, non voiced; harmonics
■	==	Slap tongue

Clarinet in Bb multiphonic fingering ; --



Is not transposed in score!

Horn in F ;

X H	==	Slap mouthpiece, <u>all</u> valves open
/ H	==	Slap mouthpiece, <u>all</u> valves closed
X ⊗	==	air only (no pitch), <u>all</u> valves open
/ ▯	==	air only (no pitch), <u>all</u> valves closed
⚡	==	Repeated tones staccatissimo, as fast as possible. <u>NO</u> flutter tongue

Bassoon ;

×

==

Keyclicks

◊

==

Fingered, non voiced; harmonics

Flz 

o
r

==

Flutter tongue

≡

⚡

==

Repeated tones staccatissimo, as fast as possible. NO flutter tongue

Óvíð

G. Karel

♩ = 30/♩ = 60
♩ = 120/♩ = 240

1

Flute: *pp*, triplet, sextuplet

Oboe: Rest

Clarinet in Bb: *loco*

Horn in F: *ppp*, H

Bassoon: *p*, triplet

Flute: *p*, quintuplet, triplet

Oboe: *ff*

Clarinet: *mf*

Horn in F: *ppp*, H

Bassoon: *f*, *8va*

Flute: *pp*, triplet, sextuplet

Oboe: *f*

Horn in F: *f*, triplet

Bassoon: *f*, triplet

Flute: *pp*, sextuplet, triplet

Oboe: *ff*

Clarinet: *p*

Bassoon: *ff*, triplet, triplet

13 $\frac{3}{8}$ $\frac{7}{8}$ $\frac{4}{16}$

Fl. *Flz* *ppp*

Ob. *ff* 7

Cl.

Hn. *p* 2:3 3:2 *p* 2:3 3:2

Bsn. *f* 3 *f* *f*

16 $\frac{2}{4}$ $\frac{3}{8}$ $\frac{4}{16}$

Fl. *pp* 3 6

Ob. *Flz* *ff* 7

Cl. *loco* (*p*)

Hn. *ppp* H H

Bsn. *f* *ppp* H

19 $\frac{4}{16}$ $\frac{2}{4}$ $\frac{3}{8}$

Fl.

Ob.

Cl.

Hn. *H* *mf* 2 3 5 *f* *mf* 5

Bsn. *p* 3 3 *ff* 7:4

22 $\frac{3}{8}$ $\frac{4}{16}$ $\frac{3}{8}$

Fl. *p* 5 3

Ob.

Cl.

Hn. *ff* 3 *f*

Bsn. *f* *f*

25 $\frac{3}{8}$ $\frac{4}{16}$ $\frac{2}{4}$

Fl. $\frac{3}{8}$

Ob. $\frac{4}{16}$ *pp* $\frac{2}{4}$

Cl. *ppp* *pp*

Hn. *ppp* *H* *H* *H*

Bsn. $\frac{3}{8}$

28 $\frac{2}{4}$ $\frac{4}{16}$ $\frac{2}{4}$ $\frac{4}{16}$

Fl. *pp* $\frac{2}{4}$ $\frac{4}{16}$

Ob.

Cl.

Hn.

Bsn. *p*

31 $\frac{4}{16}$ $\frac{2}{4}$

Fl. $\frac{4}{16}$ $\frac{2}{4}$

Ob.

Cl.

Hn.

Bsn. *p*

34 $\frac{3}{8}$ $\frac{4}{16}$

Fl. $\frac{3}{8}$ $\frac{4}{16}$

Ob. *ppp* $\frac{3}{8}$ $\frac{4}{16}$

Cl. *pp*

Hn. *p* *H* *H* *ppp* *H*

Bsn. *f*

2 ♩ = 36/♩ = 72
♩ = 144/♩ = 288

37 $\frac{4}{16}$ 7 $\frac{7}{16}$

Fl. *Flz* *ppp* *Flz*

Ob. *pp* *Flz* *p*

Cl. *f* *ppp* *ff*

Hn. *f* *f*

Bsn. *f* *pp* *pp*

40 $\frac{3}{16}$ $\frac{3}{16}$ $\frac{7}{16}$

Fl. *ppp* *Flz* *pp*

Ob. *p* *ff*

Cl. *ff*

Hn. *f* *pp*

Bsn. *pp* *f* *pp* *pp*

43 $\frac{3}{16}$ $\frac{4}{4}$ 9 $\frac{9}{16}$

Fl. *Flz*

Ob. *ff* *Flz*

Cl.

Hn. *pp* *H* *H* *H* *H*

Bsn. *f* *pp* *mf* *ff*

46 $\frac{9}{16}$ $\frac{3}{4}$ $\frac{4}{16}$ 3 $\frac{3}{4}$

Fl.

Ob.

Cl.

Hn. *f* *pp* *ff* *p*

Bsn. *f* *pp* *ff* *Flz*

49 $\frac{3}{4}$ $\frac{3}{4}$ $\frac{3}{4}$

Fl. *pp*

Ob.

Cl.

Hn.

Bsn. *f* *ff* *mf* *ff*

Flz

52 $\frac{3}{4}$ 7 16

Fl. *pp*

Ob.

Cl. *f* *ppp* *f*

Hn. *mf*

Bsn. *f* *ff* *pp* *f* *pp*

Flz

55 $\frac{3}{4}$

Fl. *pp*

Ob. *pp*

Cl. *f* *ppp* *f*

Hn. *pp* H H H H

Bsn. *f* *pp* *ff* *f* *pp* *ff*

Flz

58 $\frac{3}{4}$

Fl. *ff*

Ob. *p*

Cl. *p*

Hn. *f*

Bsn. *pp* *f* *pp*

Flz

73 $\frac{3}{4}$ $\frac{3}{8}$ $\frac{2}{4}$

Fl. *ppp*

Ob.

Cl. *f* *ppp* *f*

Hn.

Bsn. *mf* *ff* Flz

76 $\frac{2}{4}$

Fl. *pp* *f*

Ob. *pp* *f*

Cl. *pp*

Hn. *pp* *f*

Bsn. *pp* *f* *pp*

79

Fl. *ff*

Ob.

Cl.

Hn. *ff*

Bsn. *mf* *ff* Flz

82 $\frac{3}{16}$ $\frac{3}{8}$ $\frac{4}{8}$

Fl. *pp*

Ob.

Cl.

Hn. *f* *Flz*

Bsn. *f* *pp* *ff*

$\text{♩} = 43/\text{♩} = 86$
 $\text{♩} = 172/\text{♩} = 344$

85 $\frac{4}{8}$ $\frac{3}{8}$

Fl.

Ob. *Flz* *p*

Cl.

Hn.

Bsn. *mf*

87 $\frac{4}{4}$

Fl.

Ob.

Cl. *ff*

Hn. *f* *p* *ppp*

Bsn. *f* *ff*

89 $\frac{2}{4}$

Fl. *ff*

Ob. *f*

Cl.

Hn. *z*

Bsn.

90 $\frac{2}{4}$

Fl.

Ob.

Cl.

Hn. *f*

Bsn. *f* *pp* *ff*

Flz

91

Fl. Flz

Ob. *p*

Cl. *p*

Hn.

Bsn.

Detailed description: This system covers measures 91 and 92. The Flute (Fl.) part has a fermata over measure 91. The Oboe (Ob.) part has a melodic line starting in measure 91 with a piano (*p*) dynamic. The Clarinet (Cl.) part has a melodic line starting in measure 92 with a piano (*p*) dynamic. The Horn (Hn.) and Bassoon (Bsn.) parts are mostly silent in these measures.

93

Fl. *pp* 7:4 3 5:4

Ob.

Cl.

Hn. *p* *ppp*

Bsn.

Detailed description: This system covers measures 93 and 94. The Flute (Fl.) part has a complex melodic line with triplets and a 5:4 interval, marked *pp*. The Oboe (Ob.) and Clarinet (Cl.) parts are silent. The Horn (Hn.) part has a melodic line starting in measure 93 with a piano (*p*) dynamic, ending in measure 94 with a pianissimo (*ppp*) dynamic. The Bassoon (Bsn.) part is silent.

94

Fl. *ff* Flz *p*

Ob. *mf* *p*

Cl. *mf* *p*

Hn. *f* 2 3 2 3 2 5:4

Bsn.

Detailed description: This system covers measures 94 and 95. The Flute (Fl.) part has a melodic line starting in measure 94 with a fortissimo (*ff*) dynamic. The Oboe (Ob.) part has a melodic line starting in measure 94 with a mezzo-forte (*mf*) dynamic. The Clarinet (Cl.) part has a melodic line starting in measure 94 with a mezzo-forte (*mf*) dynamic. The Horn (Hn.) part has a melodic line starting in measure 94 with a forte (*f*) dynamic, including fingerings (2, 3, 2, 3, 2) and a 5:4 interval. The Bassoon (Bsn.) part is silent.

95

Fl.

Ob. Flz

Cl.

Hn.

Bsn.

Detailed description: This system covers measures 95 and 96. The Flute (Fl.) part is silent. The Oboe (Ob.) part has a melodic line starting in measure 95 with a fermata over measure 95. The Clarinet (Cl.) part has a melodic line starting in measure 95. The Horn (Hn.) and Bassoon (Bsn.) parts are silent.

96

Fl. *pp* 7:4^Δ 3 5:4^Δ

Ob.

Cl.

Hn. *p* *ppp*

Bsn.

97

Fl.

Ob. *f* 5:4^Δ

Cl. *ff* 9:8^Δ

Hn. *z*

Bsn.

3/4

98

Fl. *ff* 5:4^Δ 11:8^Δ 2:3

Ob. *mf* *f* 5:4^Δ

Cl.

Hn.

Bsn.

2/4 16

99

Fl. *pp* 7:4^Δ 3:2^Δ 5:4^Δ 16 7 16 3/4

Ob. *f* 5:4^Δ *p* Fl.

Cl.

Hn.

Bsn.

102 $\frac{3}{4}$

Fl. *ff* 5:4 Δ 11:8 Δ 2:3

Ob. *P* Flz *f* 5:4 Δ

Cl.

Hn.

Bsn.

103 $\frac{3}{4}$

Fl. 5:4 Δ 11:8 Δ 2:3

Ob. *mf*

Cl.

Hn.

Bsn.

104 $\frac{2}{4}$ 7 16

Fl. *pp* 7:4 Δ 3

Ob.

Cl.

Hn. *mf* 5:4 Δ

Bsn. *mf* 5:4 Δ *pp*

106 $\frac{2}{4}$ 7 16 33

Fl. 5:4 Δ 7:4 Δ 3:2 Δ *pp*

Ob. *P* Flz

Cl.

Hn.

Bsn.

107 $\frac{3}{4}$ $\frac{3}{4}$

Fl. $5:4$

Ob.

Cl. *p*

Hn.

Bsn.

108 $\frac{3}{4}$ $\frac{2}{4}$ $\frac{3}{4}$

Fl.

Ob.

Cl.

Hn. *ff*

Bsn. *ff* $\frac{8^{va}}{3}$

110 $\frac{3}{4}$ $\frac{2}{4}$

Fl. *ff* $5:4$ $2:3$ $11:8$

Ob. *f* $5:4$

Cl. *ff* $9:8$

Hn. *f* $5:4$ $\frac{2}{3}$ $\frac{3}{2}$ $\frac{2}{3}$

Bsn. *f* *ff* $\frac{8^{va}}{3}$

111 $\frac{2}{4}$ $\frac{4}{4}$

Fl.

Ob.

Cl.

Hn.

Bsn. *p* *ppp*

114 7
16

Fl. *pp* 7:4, 3:2, 5:4

Ob.

Cl.

Hn. *p* *ppp*

Bsn.

117 6
16

Fl. 7:4, 3, 5:4

Ob.

Cl. *p*

Hn.

Bsn.

119 7
16 3
4

Fl. *Flz*

Ob. *f* *p*

Cl.

Hn.

Bsn.

122 2
4 2
4

Fl.

Ob.

Cl.

Hn.

Bsn. *mf* *pp* *mf* *pp* 5:4, 5:4

124 4
16

Fl. *Flz*

Ob.

Cl.

Hn. *f* *mf* 6:4, 5:4, 5:4

Bsn.

126 7 4
16 16

128 4 4
16 4

131 4
8

134 2
4

136 $\frac{2}{4}$ $\frac{3}{4}$

Fl. *ff*

Ob. *f* 5:4

Cl. *ff* 9:8

Hn.

Bsn.

137 $\frac{3}{4}$ $\frac{7}{32}$

Fl.

Ob. 5:4

Cl. 9:8

Hn.

Bsn.

138 $\frac{4}{32}$ $\frac{3}{2}$

Fl.

Ob.


Cl. *ff* 9:8


Hn.


Bsn. *f* *ff* 3:2 3

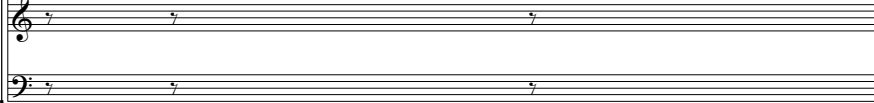
$\text{♩} = 29 \text{♩} = 58$
 $\text{♩} = 116 \text{♩} = 232$


141 4/16

Fl. 


Ob. 

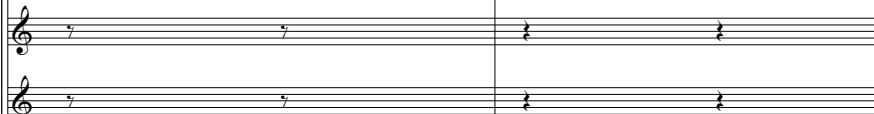
Cl. 

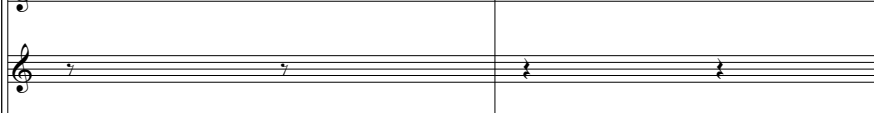
Hn. 

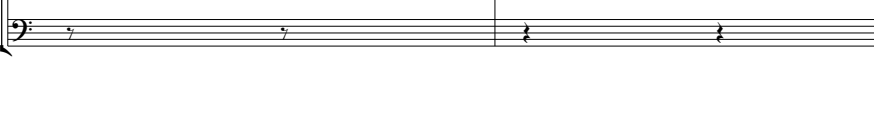
Bsn. 


143 2/4

Fl. 


Ob. 


Cl. 

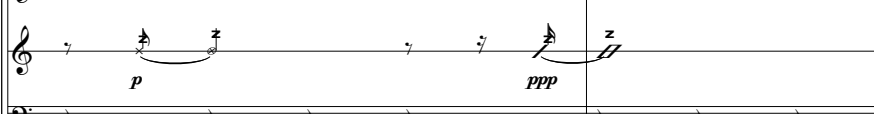
Hn. 


Bsn. 


146 7/32

Fl. 


Ob. 


Cl. 

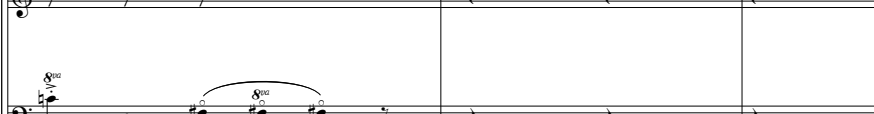
Hn. 


Bsn. 


149 2/4

Fl. 

Ob. 

Cl. 

Hn. 

Bsn. 

153 $\frac{3}{8}$ $\frac{2}{4}$ $\frac{4}{16}$

Fl. *ff*

Ob.

Cl. *ff* 9:8 Δ

Hn.

Bsn.

158 $\frac{4}{16}$ $\frac{7}{16}$

Fl. *ff*

Ob. *p* Flz

Cl.

Hn.

Bsn.

161 $\frac{4}{4}$ $\frac{3}{4}$

Fl. *ppp* Flz

Ob. *ppp*

Cl.

Hn. *p* *f*

Bsn.

164 $\frac{3}{4}$ 5:4 Δ 11:8 Δ 2:3 Δ 9:8 Δ

Fl. *ff*

Ob.

Cl. *ff* 9:8 Δ

Hn.

Bsn. *f* *ff* 3

165

Fl. *ff* 5-4 11:8 2:3

Ob. *mf*

Cl.

Hn.

Bsn.

4/4

Detailed description: This system covers measures 165 to 168. The Flute part features a dynamic crescendo from *ff* (fortissimo) to *mf* (mezzo-forte) over a 5-measure phrase (5-4) and an 11-measure phrase (11:8). A 2-measure phrase (2:3) is also indicated. The other instruments (Oboe, Clarinet, Horn, Bassoon) are mostly silent, with the Oboe playing a few notes in measure 168.

166

Fl.

Ob.

Cl.

Hn. *f* *pp*

Bsn. *mf* *pp* 5-4

4/4 3/4

Detailed description: This system covers measures 166 to 168. The Flute part is silent. The Horn part has a dynamic marking of *f* (forte) in measure 166 and *pp* (pianissimo) in measure 167. The Bassoon part has a dynamic marking of *mf* (mezzo-forte) in measure 168 and *pp* (pianissimo) in measure 169. A 5-measure phrase (5-4) is marked in the Bassoon part.

169

Fl. *ff* 5-4 11:8 2:3

Ob.

Cl.

Hn.

Bsn.

Detailed description: This system covers measures 169 to 172. The Flute part features a dynamic crescendo from *ff* (fortissimo) to *mf* (mezzo-forte) over a 5-measure phrase (5-4) and an 11-measure phrase (11:8). A 2-measure phrase (2:3) is also indicated. The other instruments are silent.

170

Fl. *ff* 5-4 11:8 2:3

Ob. *f* 5-4

Cl.

Hn.

Bsn.

6/16

Detailed description: This system covers measures 170 to 172. The Flute part features a dynamic crescendo from *ff* (fortissimo) to *mf* (mezzo-forte) over a 5-measure phrase (5-4) and an 11-measure phrase (11:8). A 2-measure phrase (2:3) is also indicated. The Oboe part has a dynamic marking of *f* (forte) and a 5-measure phrase (5-4). The other instruments are silent.

171 $\frac{6}{16}$ $\frac{3}{16}$ $\frac{4}{8}$ $\frac{3}{4}$

Fl. mf

Ob.

Cl.

Hn. f

Bsn. pp f pp

174 $\frac{3}{4}$ $\frac{4}{4}$

Fl. ff

Ob.

Cl.

Hn.

Bsn.

175 $\frac{4}{4}$

Fl. ppp

Ob. ppp

Cl. p

Hn. p ppp

Bsn. mf pp

176 $\frac{3}{8}$

Fl. pp

Ob.

Cl.

Hn. z

Bsn.

178 $\frac{4}{4}$

Fl. $\frac{7:4^{\Delta}}$ $\frac{3:2^{\Delta}}$ $\frac{5:4^{\Delta}}$

Ob.

Cl.

Hn. *p* *ppp*

Bsn.

181 $\frac{3}{4}$

Fl.

Ob.

Cl.

Hn. *p* *ppp*

Bsn. *mf* *pp* $\frac{5:4^{\Delta}}$

184 $\frac{2}{4}$ 7 16

Fl.

Ob.

Cl.

Hn.

Bsn. *mf* *pp* $\frac{5:4^{\Delta}}$

190 7 16 $\frac{3}{8}$

Fl. *pp* $\frac{7:4^{\Delta}}$ 3 $\frac{5:4^{\Delta}}$

Ob. Fl. *ppp*

Cl.

Hn.

Bsn.

192

Fl. 7:4 3 5:4 2/4

Ob.

Cl.

Hn.

Bsn.

195

Fl.

Ob.

Cl.

Hn. p ppp

Bsn.

201

Fl.

Ob.

Cl.

Hn.

Bsn. mf pp

204

Fl. 7:4 3 5:4 3/4

Ob.

Cl. p

Hn.

Bsn.

5

♩ = 36/♩ = 72
♩ = 144/♩ = 288

207

Fl. *ppp* *ppp*

Ob. *ppp*

Cl. *ppp* *ppp* *f* *ppp*

Hn. *ppp* *p* *ppp*

Bsn.

3/4 4/4 2/4

210

Fl. *pp*

Ob. *pp*

Cl. *p* *ppp* *pp* *gliss.*

Hn. *pp*

Bsn. *pp* *f* *pp*

7 16 28

212

Fl. *pp*

Ob. *p*

Cl. *p*

Hn. *p*

Bsn. *p*

5 16

214 $\frac{7}{16}$ $\frac{3}{4}$ $\frac{2}{4}$

Fl.

Ob. *p* *mf*

Cl.

Hn. *mf* 1 3 1 2 3 1 3 1 2 3 1 3

Bsn. *mf* *pp* 5:4

216 $\frac{2}{4}$ $\frac{4}{4}$

Fl.

Ob. *mf* *f*

Cl.

Hn. *mf* *ff* *f* 2 1 2 3 2 1 2 3 2 1 2 3

Bsn. *f* 8va

218 $\frac{4}{4}$ $\frac{2}{4}$ $\frac{13}{8}$

Fl.

Ob. *f* 5:4

Cl.

Hn. *f* 1 2 3 2 1 2 3 2 1 2 3 2 3 2

Bsn. *mf* *ff* *pp* *f* *pp* Flz

220 13/8 5/4

Fl. *ff* 5-4, 11-8, 2-3

Ob. *ff* Flz 7:4

Cl. *ff* 9-8

Hn. *ff*

Bsn. *ff* 7:4, *f*, *pp*, *ff*, *pp* 7:4

221 5/4 2/4

Fl.

Ob.

Cl.

Hn.

Bsn. *mf*, *ff* Flz, *pp*, *f*, *pp*

223 2/4 9/16 3/8

Fl. *pp* 3, 6, 3, 3, 5-4

Ob. *f*, *mf*

Cl. *ppp*, *p* loco, *ppp*

Hn. *ppp*, *pp* H H H H

Bsn. *f*, *ff* 7:4

225 $\frac{3}{8}$ $\frac{4}{16}$ $\frac{3}{4}$

Fl. *f* *mf*

Ob. *f* *mf*

Cl. *ppp* *f* *ppp*

Hn.

Bsn. *f* *ff*

227 $\frac{3}{4}$ $\frac{11}{16}$

Fl. *ppp*

Ob. *ppp*

Cl. *f*

Hn. *mf* *ff*

Bsn. *p*

228 $\frac{11}{16}$ $\frac{6}{16}$

Fl. *ppp*

Ob.

Cl. *ff*

Hn. *f* *p*

Bsn. *pp* *f* *pp*

229 **6/16**

Fl. **7/16**

Ob.

Cl.

Hn.

Bsn.

ff

pp

f

f

231 **4/4**

Fl.

Ob.

Cl.

Hn.

Bsn.

p

p

mf

pp *ff* *pp*

mf

ff

233 **2/4**

Fl.

Ob.

Cl.

Hn.

Bsn.

pp

pp

mf

pp *f* *pp*

234 $\frac{3}{4}$ $\frac{6}{4}$ $\frac{3}{4}$

Fl. *Flz* *p* *ff* *mf*

Ob.

Cl.

Hn.

Bsn. *mf* *pp* *5:4*

236 $\frac{3}{4}$ $\frac{2}{4}$

Fl. *ff* *5:4* *11:8* *2:3*

Ob.

Cl.

Hn. *p*

Bsn.

237 $\frac{2}{4}$ $\frac{7}{32}$

Fl.

Ob.

Cl.

Hn.

Bsn.

241 $\frac{7}{32}$ $\frac{4}{8}$ $\frac{4}{4}$ $\frac{3}{4}$

Fl.

Ob.

Cl.

Hn.

Bsn. *f* *ff* *pp* *f* *pp* *mf* *ff* *Flz*

244 $\frac{3}{4}$

Fl. *ff* 5:4 11:8

Ob.

Cl. *ff* 9:8

Hn.

Bsn. *f* 7:4 *pp* *ff* *pp*

245 $\frac{4}{8}$ $\frac{4}{4}$

Fl. *ff*

Ob. Flz *ff* 7

Cl. *ff*

Hn. *ff* *p* *f* 5:4 2 3 2 3 2

Bsn. *ff* 7:4 *pp* *f* *pp*

248 $\frac{4}{4}$ $\frac{3}{4}$ $\frac{2}{4}$

Fl.

Ob. *f* 5:4

Cl.

Hn. *pp* *f* 5:4 6:4 7:4

Bsn. *mf* *ff* *f* *pp* *ff* *pp*

250 $\frac{2}{4}$ 7
16

Fl. *f* *mf* *mf*

Ob. *f* *mf* *mf*

Cl. *f* *mf* *mf*

Hn. *mf* *f* *mf* *ff* *mf*

Bsn. *f* *f* *mf*

253 $\frac{7}{16}$ $\frac{5}{8}$ $\frac{3}{8}$ 7
16

Fl. *p* *p* *pp*

Ob. *p* *p* *pp*

Cl. *p* *p* *pp*

Hn. *p* *p* *pp*

Bsn. *p* *p* *pp*

256 $\frac{7}{16}$ $\frac{9}{16}$ $\frac{4}{4}$

Fl. *pp* *pp* *pp*

Ob. *pp* *pp* *pp*

Cl. *pp* *p* *ppp*

Hn. *pp* *f* *pp*

Bsn. *pp* *f* *pp*

258 $\frac{4}{4}$ $\frac{3}{4}$

Fl. *ppp* *ppp* *ppp*

Ob. *ppp* *ppp* *ppp*

Cl. *ppp* *f* *ppp* *ppp*

Hn. *p* *ppp* *ppp*

Bsn. *p* *ppp* *ppp*